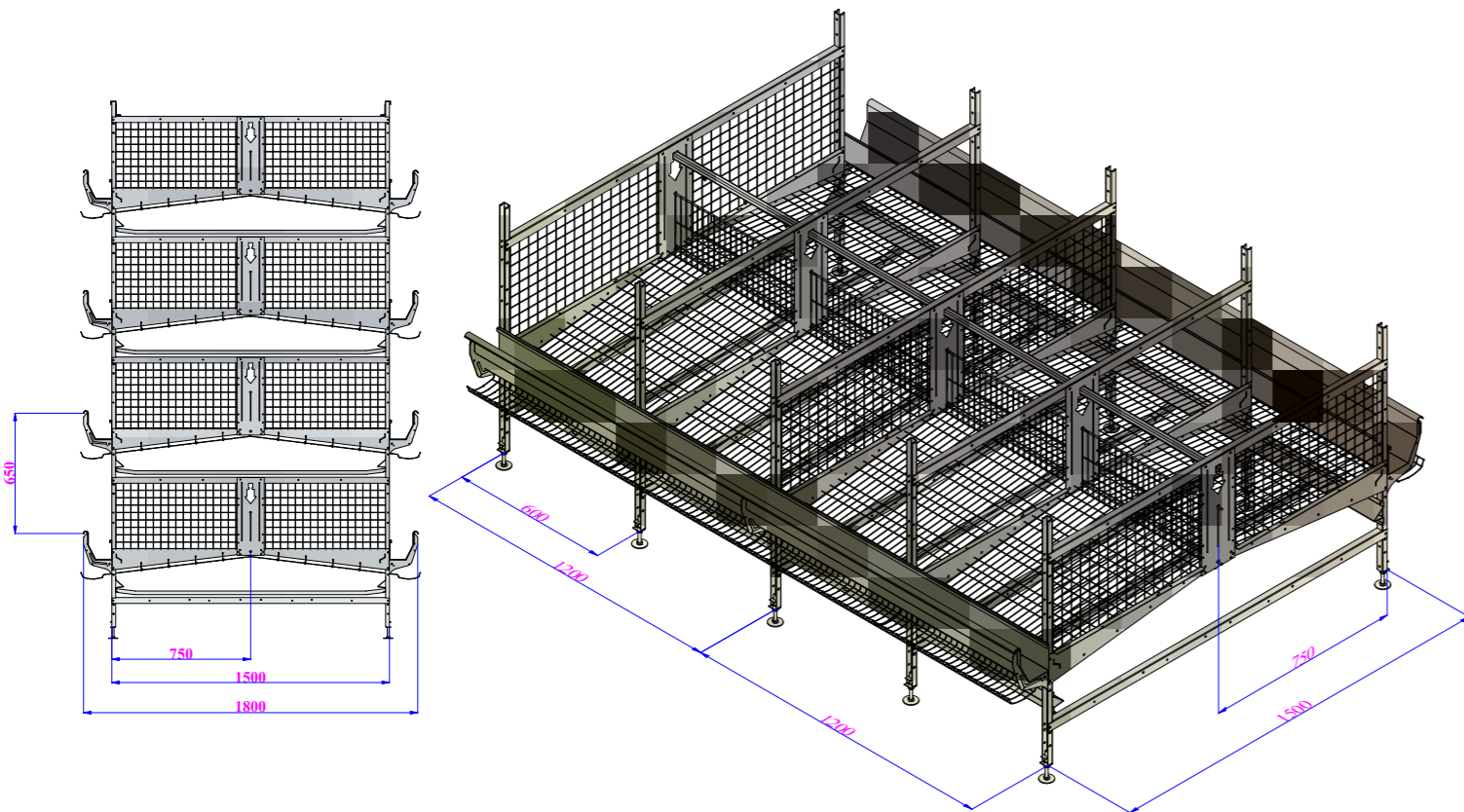


MODEL	TIERS	WIDTH (A)	HIGHT (B)	PITCH (C)	1. FLOOR HEIGHT FROM THE GROUND (X)	
T750	4 TIERS	2300	3100	650	350	
T750	5 TIERS	2300	3750	650	350	
T750	6 TIERS	2300	4400	650	350	
T750	7 TIERS	2300	5050	650	350	
T750	8 TIERS	2300	5700	650	350	
T750	8 TIERS WITH (4+4)	2300	B1	3000	650	350
			B2	3060		
T750	12 TIERS WITH (4+4+4)	2300	B1	3000	650	350
			B2	2960		
			B3	3060		
T750	12 TIERS WITH (6+6)	2300	B1	4310	650	350
			B2	4360		



MODEL	DIMENSIONS OF SECTION (mm)	SURFACE AREA IN SECTION (cm <sup>2</sup> )	NUMBER OF LAYER IN EACH SECTION	AREA PER LAYER (cm <sup>2</sup> )	FEEDING AREA PER LAYER (cm)
T750	1200 x 750	9.000	22	409	5,45
			21	428,5	5,71
			20	450	6,00

# GÜRES TECHNOLOGY

## T-750 ENRICHABLE LAYER CAGE



We know-how!



Telephone: +90 236 357 22 12 Fax: +90 236 357 22 92  
 E-mail: [teknoloji@gures.com.tr](mailto:teknoloji@gures.com.tr) Web: [www.gurestechnology.com](http://www.gurestechnology.com)  
 Address: İstasyon St. 3.km on the İzmir - İstanbul Road No:29 Saruhanlı / MANİSA / TURKEY

f /guresteknoloji

▶ guresteknoloji

in /company/guresteknoloji



# T-750 ENRICHABLE LAYER CAGE

High quality and maximum performance

Güres Technology, as a part of Güres Group, which has the largest full integrated egg production facility of Turkey, established in 2002 with half-century experience. With 20.000 m<sup>2</sup> production area and of 8.700 m<sup>2</sup> R&D operating area Güres Technology became one of the most reliable companies many countries as one of the leading cage manufacturers of Turkey. We, trust our technological infrastructure, wide product range, experienced R&D team and energetic staff, and we ready to share our technical wealth and experience with our customers



## Cage That Can Be Adapted to European Union Animal Welfare Standard!

- In dimension 1200 x 750 mm section of cage
- Can be converted to enriched cage by adding perching area, curtained nest box, claw shorteners, scratching carpet and removing some parts

\* Enriched Cage System which produced by Güres Technology, complies with animal welfare and EU directive 1999/74 dated 19 July 1999.



## Cage With Reinforced Construction

- 2 mm thick cage legs on each 60 cm.
- Secured with steel dowels on each 6 meter.
- Ø 60 mm metal shoes are used at the places where the cage legs are pressed on the ground.



## Minimum Crack Maximum Hygiene!

- Fully automated lift or elevator egg collection alternatives
- Antistatic, non-elongated, special PP egg belts
- Maximum cleaning with special belt brush system
- Cleaner eggs with manure-free bottom wire design
- 90 degree pivotable, direct conveyor system
- With Chain egg conveyor system, not with pipe!



## Low Feed Loss With Perfect Feeding Systems

- Trolley or chain feeding system alternatives
- 4 stage feed distribution devices
- Homogenous feed distribution
- Strong feed trough with special double curved design



## Smooth and Fast Installation

- Fully automated cage system can be installed up to 8 tiers without catwalk and up to 12 tiers with catwalk
- Cage batteries scaled with calibrated digital measuring devices
- On-site inspection, on-time installation with experienced discovery and assembly team



- All cages have automatic drinking and manure removal systems.
- There are 6 red imported nipples and V type drop holders in each two sections.
- There is a PP manure band extending along the cage, under each cage row and tier.
- Each tier has rollers and scrapers.